

# ARE YOU TURNING 65?

## QUESTIONS ABOUT MEDICARE?



**CANDICE SCHULTZ**

*INSURANCE CONSULTANT*

316.737.5395 | [CSCHULTZ@UNITEDCAPITALGROUP.NET](mailto:CSCHULTZ@UNITEDCAPITALGROUP.NET)



**UnitedCapitalManagement**  
*of Kansas, Inc.™*

## Helping *you* choose the right plan

### 4-6 MONTHS BEFORE TURNING 65

- ❑ **Become familiar with basics**
  - Read about Medicare Part A
  - Read about Medicare Part B
- ❑ **Become familiar with costs**
  - The cost of Medicare Part A
  - The cost of Medicare Part B

### 3 MONTHS BEFORE TURNING 65

- ❑ **Enroll in Medicare Part A**
- ❑ **Enroll in Medicare Part B (if needed)**
- ❑ **Compare health plan options**
- ❑ **Compare drug plan options**
- ❑ **Compare costs of plans**
- ❑ **Learn about Medicare/VA benefits**

### 2 MONTHS BEFORE TURNING 65

- ❑ **Confirm receipt of Medicare card**
- ❑ **Enroll in health & drug plan**
- ❑ **Apply for "Extra Help" if eligible**

### 1 MONTH BEFORE TURNING 65

- ❑ **Confirm receipt of your health and/or drug plan card**



[WWW.UCMOFKANSAS.COM](http://WWW.UCMOFKANSAS.COM)

# MEDICARE PARTS

*at a glance*

## PART A

WHAT IT COVERS  
Hospital stays, hospice, skilled  
nursing care following a qualifying  
hospitalization, home health care.



## PART B

WHAT IT COVERS  
Doctor services, outpatient  
services, medical equipment



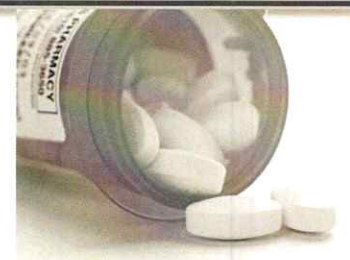
## PART C

WHAT IT COVERS  
Same services as Part A & Part B,  
and often prescription drug  
coverage, as well as other services



## PART D

WHAT IT COVERS  
Prescriptions



We want you to be informed so you can make the best decision for your healthcare and financial future. Call Candice at 316-737-5395 to schedule a meeting!